

CARDEA ZERO Z340

Unleash the Full Speed



MP34 M.2 PCIe SSD

CARDEA ZERO Z340 / MP34 M.2 PCIe SSD Firmware Update Tool Installation Guide

■ Purpose

This installation guide describes the process of updating the firmware on the MP34 SSD using our SSD firmware update tool. Firmware updates bring some alterations in the program, which are necessary to enable the corresponding devices to operate proficiently. A firmware update will optimize the performance of firmware or device driver, enhancing the performance.

■ Matters needing attention

1. Before starting the firmware update process :

- ✂ To check for a firmware update for your product, please download the S.M.A.R.T Tool from TEAMGROUP's website or using CrystalDiskInfo to check the firmware version.
- ✂ The SSD whose firmware is to be updated cannot be used as a system disk. Do not use M.2 NVME SSD Enclosure Adapter to connect the MP34 to your computer.
- **S.M.A.R.T. Tool Link** <https://www.teamgroupinc.com/tw/support/download.php>
- **CrystalDiskInfo Link** <https://crystalmark.info/en/software/crystaldiskinfo/>

CARDEA ZERO Z340 / MP34 M.2 PCIe SSD Firmware Version

Capacity	4TB	2TB	1TB
Original Firmware Version	VB441D58	VB441D59	VB441D59
New Firmware Version	VB4D1163		

NOTES : If the firmware version has been confirmed as **VB4D1163**, there is no need to perform this firmware update procedure.

2. During the firmware update process :

- ✧ This firmware update process may take a few minutes, please be patient and follow the instructions to complete the firmware update process.
- ✧ During the firmware update process, the system needs to be restarted so that the SSD can update the firmware version correctly. Therefore, the computer will be shut down and needs to be restarted three times. This is normal. Do not turn off the computer by yourself during the firmware update process.

3. After the firmware update process :

- ✧ Please check the firmware version again by using TEAM S.M.A.R.T. Tool to confirm the latest firmware have been completed.

■ Steps definition



1. Make sure the TEAM MP34 SSD you want to re-initial is inserted. Due to the differences between platforms, please refer to the relevant installation instructions before installing the SSD.



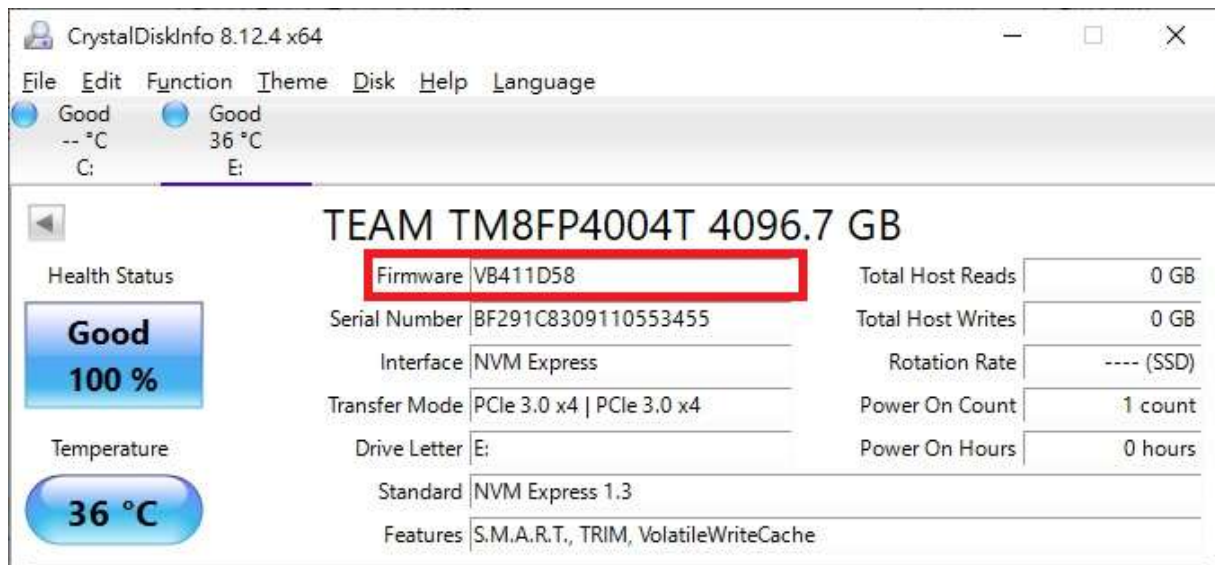
- Download the file from link, and unzipping files to the desktop. there are two folders after unzipping files. Select the folder according to the different capacity of the SSD, please refer to the figure below for the two folders and the main program.

- File name : TEAM TM8FP400XT_VB441D63_FWUpdate_20210908_Release)

Table 1 illustrates the reference schematic diagram

		
Figure 1 : 4TB	Figure 2 : 2TB & 1TB	Figure 3 : Main Program

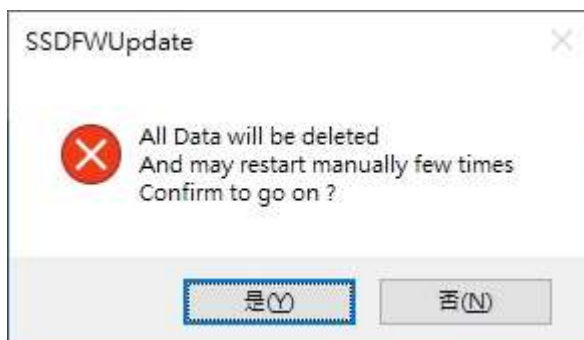
- Take **MP34 M.2 PCIe SSD 4TB** as an example. Confirm that **the firmware of the original version is VB441D58.**



4. Enter the folder in Figure 1 and click on the main program SSDFWUpdate in the folder in Figure 3 to start the firmware update program. The MP34 4TB SSD will be detected as below show.

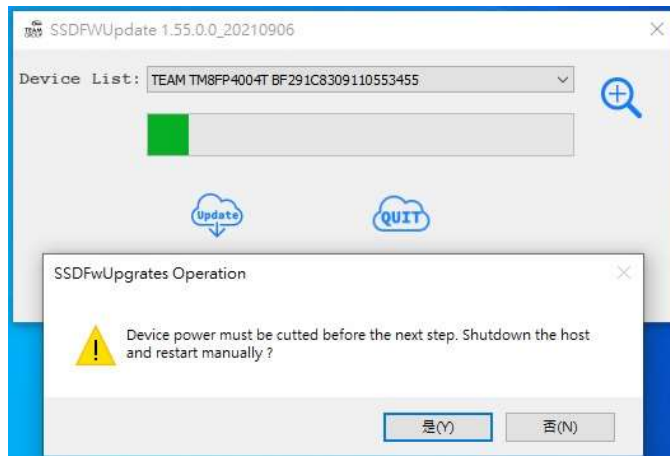


5. Click the Update button to start the firmware update process, the SSDFWUpdate dialog box will appear, click **[Yes (Y)]** to continue the next step.

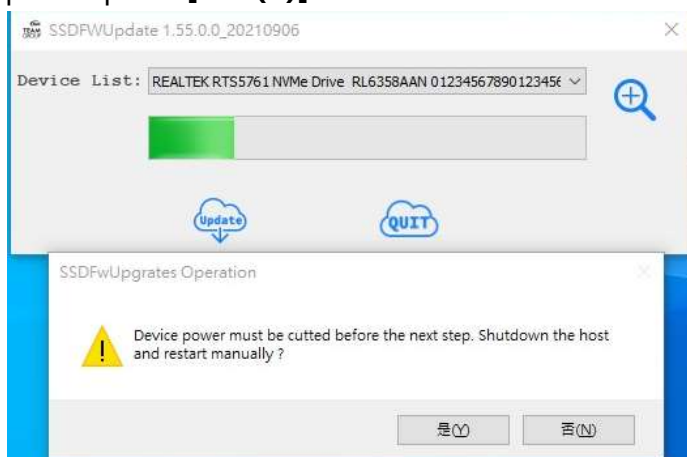


Please note that the data in the SSD will be **deleted** and the computer will be **shut down**.

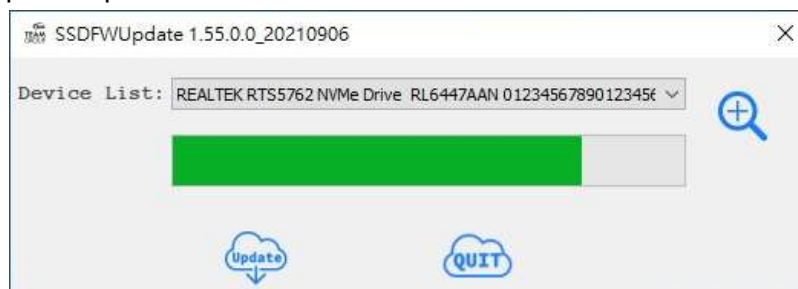
6. When the firmware update process starts, a dialog box will pop up to inform this computer that the computer will be shut down (**the first shutdown**), just press **[Yes (Y)]**. °

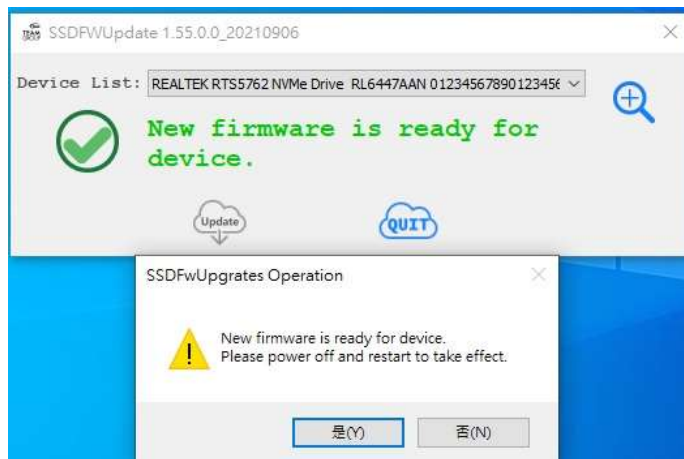


7. After the computer shuts down, please turn on the computer by yourself, the firmware update process will be carried out, and the dialog box will pop up again to inform that the computer will be shut down (**the second shutdown**), please press **[Yes (Y)]**.



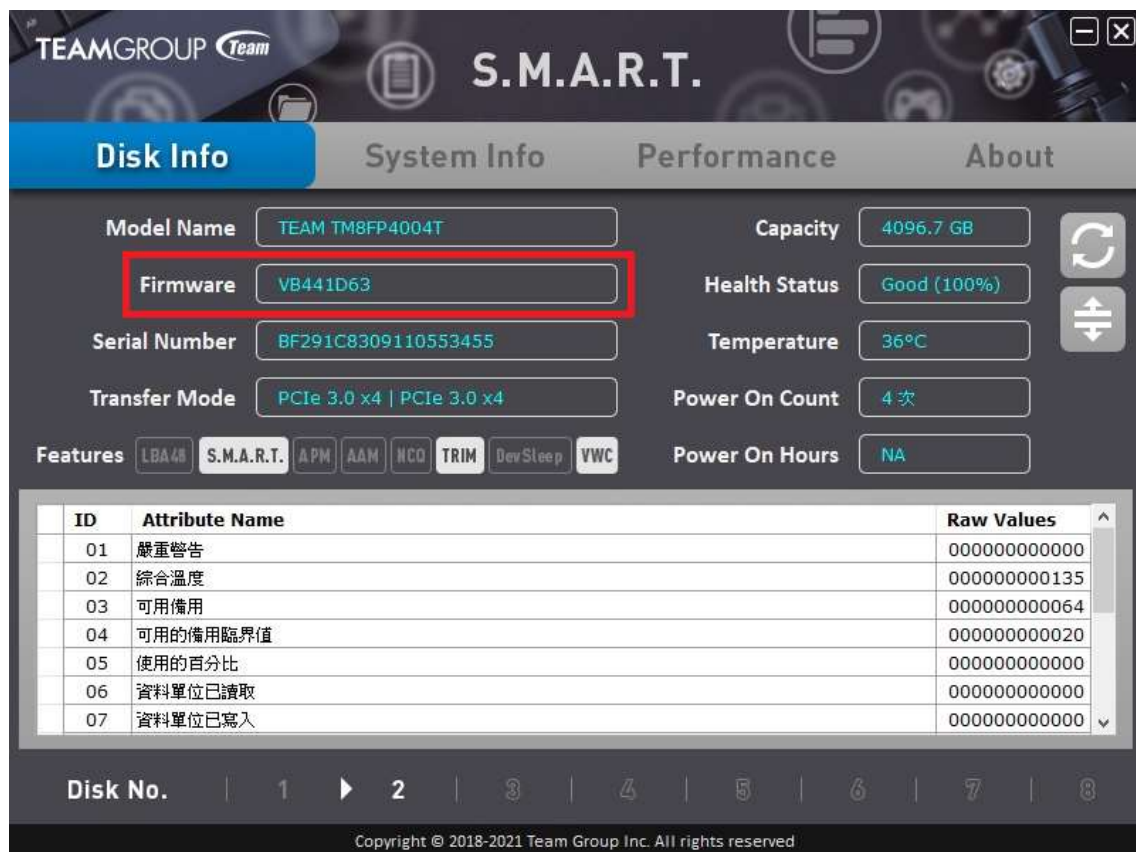
8. After the computer shuts down, please turn it on by yourself, the firmware update process will be carried out, and the last dialog box will pop up to inform this computer that the computer will be shut down (**the third shutdown**), please press **[Yes (Y)]**.





9. After the computer is shut down, please turn it on by yourself. At this time, the SSD firmware has been updated. Please use Team Group S.M.A.R.T. Tool or CrystalDiskInfo to confirm the SSD firmware version. Please see figure below.

■ TeamGroup S.M.A.R.T. Tool



■ CrystalDiskInfo

CrystalDiskInfo 8.12.4 x64

File Edit Function Theme Disk Help Language

Good -- °C C: Good 36 °C Disk 1

Health Status

Good
100 %

Temperature

36 °C

TEAM TM8FP4004T 4096.7 GB

Firmware	VB441D63	Total Host Reads	0 GB
Serial Number	BF291C8309110553455	Total Host Writes	0 GB
Interface	NVM Express	Rotation Rate	---- (SSD)
Transfer Mode	PCIe 3.0 x4 PCIe 3.0 x4	Power On Count	2 count
Drive Letter		Power On Hours	0 hours
Standard	NVM Express 1.3		
Features	S.M.A.R.T., TRIM, VolatileWriteCache		